

EKSTRUM

ET

SIMMENTALS

& SIMM/GENETICS

Annual

2017 Bull Sale

FEBRUARY 18, 2017

Kimball, SD

Check us out on Facebook



Dear Friends

Welcome to our annual bull sale. This last year the cattle market hasn't been what the previous years were, but with the heavier continental cross calves that sell at market dollaring out over other feeder cattle makes me believe that Simmental based genetics will rise to the top every time. If your breeding program consists of using purebred Simmentals, SimAngus™, or Simm/Red Angus bulls we have performance oriented bulls to fit your program. Because pounds make money year in and year out.

All our calves come off pasture with no creep. With over 45 years of raising Simmentals and over 55 years of AIng and performance testing cattle we believe this tells the true story of the calves at weaning time without being fluffed. It truly shows what bloodlines excel in the real world. The bulls were developed on a high forage ration using ground hay, ground alfalfa, corn silage, and DDG's to ensure sound feet and longevity. All our cattle rations are formulated and balanced by Livestock Visions (DVM Bruce Naasz and nutritionist Steve Peterson). All our herd health is conducted by Central Dakota Animal Clinic, DVM Jay Alberda.

Stop by anytime to come and inspect the bulls or log onto our website www.ekstrumsimmentals.com for updated information. Videos and pictures will be on DV Auction.

Thanks,

The Ekstrums

EKSTRUM SIMMENTALS

- 2017 -

ANNUAL BULL SALE

February 18, 2017



Health: All the bulls have had their shots and been poured. We will semen test the bull (s) that you purchase and will be vaccinated for foot rot and anthrax.

Terms of Sale: All sales are cash or check on day of sale.

Buyer Discount: First bull will be at full price and any bull after that will \$50 off.

Guarantee: All bulls are guaranteed against breeding injury through the first breeding season and have a breeding injury guarantee. If a replacement bull is available one will be provided. If the buyer prefers credit toward another bull, the credit will be given in the following year's sale minus the salvage value of the original bull.

Each bull becomes property and therefore is also the risk of the purchaser after it is sold.

We reserve the right to collect 100 units of semen on any bull in the sale for in herd use only. The collection will be at our expense and buyer's convenience.

Conditions of Sale: All animals will be sold in accordance with the suggested guidelines of the American Simmental Association and are available by request.

Announcements: Announcements on sale day take precedence over printed material.

Wintering: We will keep the bulls free of charge until April 1st. Arrangements can be made to keep them longer.

Trucking: We deliver free within the state of South Dakota and will assist with arrangements for out of state buyers.

Sale location: At the Ranch 5 miles south of Kimball, SD. Selling 40 yearling bulls.

Auctioneer: Justin Dikoff 605-290-0635

Sale Day Phone's:

605-778-6414

605-730-1511 Clay cell

605-730-1521 John cell

605-730-6703 Jim Benda cell

605-214-3532 Colton Buus, representing ASA

605-730-1333 Mark Grussing cell

Contact info:

Ekstrum Simmentals

36220 257th St Kimball SD 57355

Clay 605-778-6185, cell 605-730-1511,

John 605-778-6414, Cell 605-730-1521.

Go to **www.ekstrumsimmentals.com** for pictures and videos of the bulls. You can also view videos and catalog at DVAuctions.



Check us out on Facebook

DVAuction
Broadcasting Real-Time Auctions
Visit www.DVAuction.com
and Register Today!
For General Questions Please Contact Our Office:
(402) 318-5460 or support@dvauction.com

REFERENCE SIRES

Name	ASA #	BD	Color - HPS - Breed	CE	BW	WW	YW	MCE	MM	MWW	CW	MB	REA	API	TI	
BBS JUSTICE A207	2772745	3/19/13	Black - Polled - PB SM	4.9	4.1	84	133	10	20.8	62.8	54.7	0	1.24	13.4	118	74
<i>Our new black herdsire that is homo black and homo polled that was the high-selling bull in Bata Bros. 2014 bull sale. A pure power bull that traces his lineage back to Benda Simmentals.</i>																
CCR COWBOY CUT 5048Z	2703910	2/20/12	Black - Polled - PB SM	14.5	1.5	89	125	12.4	24.1	68.6	45.6	0.61	0.97	12.2	165	96
JBS MR PACE 010B	2896770	3/21/14	Red - Polled - PB SM	10.2	2.7	71	106	11.5	27.4	62.8	37	0.28	1.25	16	142	76
<i>The high-selling red Simmental power bull sold at the 2014 Benda sale.</i>																
MR NLC UPGRADE U8676	2474338	3/5/08	Black - Polled - PB SM	6.8	2.4	82	127	4	16.5	57.5	48.8	0.39	1.4	0.1	119	86
<i>The popular Ollie son that adds some different genetics to our herd with performance.</i>																
MRL RINGMAN 112Z	2735292	1/26/12	Polled - PB SM	5.9	3.6	68	114	12.1	28.2	61.9	43.6	0.12	0.76	13.9	123	69
<i>Another homo polled, red bull owned by Bata Bros. that adds performance.</i>																
TRAXS DEADWOOD A82	2795819	3/15/13	Red - Polled - PB SM	7.8	4.8	72	120	8.9	28.7	64.6	48.6	0	1.12	19.9	131	68
<i>Our new herdsire who was the high-selling bull at Traxingers Simmentals 2014 bull sale. An outcross homo polled, non-diluter red bull with an excellent EPD profile that adds style and performance to his calves.</i>																
TRAXS RUSHMORE X103	2574812	2/17/10	Red - Polled - PB SM	14.7	-0.1	67	103	19.2	6.4	40.1	31.1	0.13	1.28	17.4	148	73
WELSHS DEW IT RIGHT067T	2403649	2/10/07	HBlack - HPolled - PB SM	14.8	0.3	61	77	11	12.6	43.3	15.6	0.17	0.87	13.2	134	69
KG HIGH REGARD 2073	2790628	1/27/12	Black - Polled - PB AN	22.7	-3.9	65	117	10	20.7	53	34.8	0.07	0.4	-0.7	94	60
<i>Outcross Angus genetics.</i>																



BBS Justice



CCR Cowboy Cut



KG High Regard



TRAXS Rushmore



MRL Ringman

1

CCE EKR HICKCOCK 026D ASA# 3177159

Tattoo: 026D • BD: 2/14/16
Red • PB SM

Sire: MJ MARATHON 6W
TRAXS DEADWOOD A82
C2 SHEAR FORCE 62W

Dam: TNT GUNNER N208
CCE EKR MS WILDCAT 026X
CCE EKR MS SPREAD 739T

Act. BW	98
Act. WW	780
Adj. WW	742
1/6 WT	1044
Adj. YW	1135
ADG	2.61

EPDs	CE	BW	WW	YW	MCE	MM	MWW	MB	REA	BWratio	WWratio	WDA	API	TI
	8.4	4.3	69	108	10.7	30.9	65.3	0.01	0.82	95	98	3.16	124	66

A nice, homo polled, solid red non diluter out of a powerful cow family with his Gunner dam having a weaning weight ratio of 115 on her 5 calves. Frame score 6.3. Scrotal 34cm.



TRAXS Deadwood – Sire of Lots 1 & 2

2

CCE EKR DURANGO 027D ASA# 3177169

Tattoo: 027D • BD: 2/6/16
Red • PB SM

Sire: MJ MARATHON 6W
TRAXS DEADWOOD A82
C2 SHEAR FORCE 62W

Dam: TNT TOP CUT P274
CCE EKR MS TC 027X
CCE EKR MS PHALTLISS 742T

Act. BW	99
Act. WW	825
Adj. WW	763
1/6 WT	1164
Adj. YW	1255
ADG	3.36

EPDs	CE	BW	WW	YW	MCE	MM	MWW	MB	REA	BWratio	WWratio	WDA	API	TI
	4	5	78	122	8	21.8	60.6	-0.07	1.01	94	101	3.44	114	67

An outcross performance bull that ranks in the top 5% for WW EPD, top 3% for YW EPD and top 10% for MWW. Use this homo polled, solid red non diluter to add pounds to your next calf crop. Frame score 6.5. Scrotal 38 1/2cm.



LOT 2

3

CCE EKR JUDGE 070D ASA# 3177294

Tattoo: 070D • BD: 2/13/16
Black • PB SM

Sire: MLC MR JUSTICE W744
BBS JUSTICE A207
TNT MISS APRIL N134

Dam: SVF/NJC BUILT RIGHT N48
R F S MAXIMUM DREAM 35X
DR MS 600U BLACK DREAM

Act. BW	97
Act. WW	795
Adj. WW	768
1/6 WT	1166
Adj. YW	1291
ADG	3.67

EPDs	CE	BW	WW	YW	MCE	MM	MWW	MB	REA	BWratio	WWratio	WDA	API	TI
	7.2	3.8	73	110	9.1	21.3	57.5	0.08	0.9	95	101	3.52	120	70

Judge has an easy to look at phenotype that is packed with muscle. His WW and YW EPDs rank in the top 15% and his dam has ratioed a 107 for weaning weight on 5 calves. His maternal brother was the 2013 high seller to James McCord. Homo black and homo polled. Frame score 6.3. Scrotal 35cm.



LOT 3

4

CCE EKR TURBO 104D ASA# 3177329

Tattoo: 104D • BD: 2/9/16
Red • PB SM

Sire: ASR/GLS PACESETTER U862
JBS MR PACE 010B
JBS MISS FORCE 708X

Dam: TNT TOP CUT P274
CCE EKR MS TC 104Y
EKR MS LIGHTENING 130L

Act. BW	88
Act. WW	900
Adj. WW	847
1/6 WT	1344
Adj. YW	1476
ADG	4.4

EPDs	CE	BW	WW	YW	MCE	MM	MWW	MB	REA	BWratio	WWratio	WDA	API	TI
	6.9	3.2	83	127	9.6	24.6	66.3	0.09	0.94	105	112	4.01	129	77

A pure performance bull here who won top honors with having the heaviest yearling weight and the top gain. His WW, YW, and MWW rank him in the top 2% of the breed. He ratioed 105 for birth weight and 112 for weaning weight. Use him to add performance into your calf crop, he is homo polled, solid red non diluter. Frame score 6.9. Scrotal 38cm.



LOT 4



LOT 5



CCE EKR TODD 115D

ASA# 3177342

Tattoo: 115D • BD: 2/13/16
Red • 3/4 SM 3/16 AN 1/16 CS

Sire: IPU RED WESTERN 49X
MRL RINGMAN 112Z
MRL MISS 498N
TNT TOP CUT P274
Dam: CCE EKR MS TC 115Y
424

Act. BW	99
Act. WW	815
Adj. WW	771
1/6 WT	1188
Adj. YW	1313
ADG	3.69

EPDs	CE	BW	WW	YW	MCE	MM	MWW	MB	REA	BWratio	WWratio	WDA	API	TI
	2.8	5.2	79	124	9.2	16.3	55.7	0.03	0.58	93	102	3.59	110	69

A nice commercial cowboy bull who's WW EPD ranks him in the top 4% and YW EPD in the top 5%. He had a weaning weight ratio of 102. Homo polled, use only on red cows. Frame score 6.3. Scrotal 40 1/2cm.



LOT 6



CCE EKR SUNDANCE 134D

ASA# 3177310

Tattoo: 134D • BD: 2/3/16
Red • PB SM

Sire: MJ MARATHON 6W
TRAXS DEADWOOD A82
C2 SHEAR FORCE 62W
MRL 128W
Dam: CCE EKR YUKON ROSE 134Y
CCE EKR MS REDLINE 730T

Act. BW	99
Act. WW	810
Adj. WW	755
1/6 WT	1216
Adj. YW	1312
ADG	4.02

EPDs	CE	BW	WW	YW	MCE	MM	MWW	MB	REA	BWratio	WWratio	WDA	API	TI
	5.7	5.8	70	106	8	25.3	60.1	-0.05	0.93	93	99	3.573	112	63

An outcross, homo polled, solid red non diluter, performance bull that had an 810lb weaning weight and gained over 4lb's a day. His YW and MWW EPDs rank him in the top 15%. Frame score 6.8. Scrotal 40cm.



LOT 7



CCE EKR UPPER CUT 161D

ASA# 3177331

Tattoo: 161D • BD: 2/15/16
Black • 3/4 SM 1/4 AN

Sire: ELLINGSON LEGACY M229
MR NLC UPGRADE U8676
MS NLC MOJO S6119 B
TNT TOP CUT P274
Dam: CCE EKR MS TC 161Y
40

Act. BW	101
Act. WW	820
Adj. WW	774
1/6 WT	1188
Adj. YW	1319
ADG	3.64

EPDs	CE	BW	WW	YW	MCE	MM	MWW	MB	REA	BWratio	WWratio	WDA	API	TI
	2.8	4.9	85	128	4.6	14.4	56.8	0.13	0.98	92	102	3.61	93	71

Looking for a 3/4 blood to put on those angus cows to add pounds? Here he is! He ranks in the top 1% for WW EPD and top 3% for YW EPD. His maternal brother sold to Ryan Kott last year. Homo polled and homo black. Frame score 6.6. Scrotal 39cm.



MR NLC Upgrade – Sire of Lots 7 & 8



CCE EKR UPPER DECK 165D

ASA# 3177284

Tattoo: 165D • BD: 2/7/16
Black • PB SM

Sire: ELLINGSON LEGACY M229
MR NLC UPGRADE U8676
MS NLC MOJO S6119 B
RC CLUB KING 040R
Dam: CCE EKR PARTY GIRL 165Y
CCE MS. SPREAD AXEL 547R

Act. BW	95
Act. WW	875
Adj. WW	816
1/6 WT	1228
Adj. YW	1330
ADG	3.5

EPDs	CE	BW	WW	YW	MCE	MM	MWW	MB	REA	BWratio	WWratio	WDA	API	TI
	7.1	3.8	86	132	6.6	16.1	59	0.31	0.96	97	108	3.64	123	83

Another powerful, homo polled, homo black, Upgrade son. He ranks in the top 1% for WW and YW EPDs. He had a WW ratio of 108 and his dam has ratioed 110 for her weaned calves. Frame score 6.8. Scrotal 37cm.

9

CCE EKR TODD 235D

ASA# 3177121

Tattoo: 235D • BD: 2/3/16
Red • PB SM

Sire: MRL RINGMAN 112Z
IPU RED WESTERN 49X
MRL MISS 498N
MRL 128W
Dam: CCE MS THUNDER 235Z
CCE MS LIGHTENING 702T

Act. BW	98
Act. WW	755
Adj. WW	708
1/6 WT	1052
Adj. YW	1123
ADG	2.94

EPDs	CE	BW	WW	YW	MCE	MM	MWW	MB	REA	BWratio	WWratio	WDA	API	TI
	4.1	5.7	64	100	9.9	26	57.9	0.06	0.61	93	93	3.09	112	61

A nice outcross bull that comes from a good cow family; his calves should make some nice females. Polled, use only on red cows. Frame score 6.2. Scrotal 37cm.



LOT 9

10

CCE EKR RICHMOND 241D

ASA# 3177130

Tattoo: 241D • BD: 2/6/16
Red • 3/4 SM 1/4 AR

Sire: JBS MR PACE 010B
ASR/GLS PACESETTER U862
JBS MISS FORCE 708X
TNT GUNNER N208
Dam: CCE EKR MS SENDARO 241Z
CCE EKR MS SNICKERS 729T

Act. BW	99
Act. WW	770
Adj. WW	721
1/6 WT	1158
Adj. YW	1262
ADG	3.84

EPDs	CE	BW	WW	YW	MCE	MM	MWW	MB	REA	BWratio	WWratio	WDA	API	TI
	8.9	4.1	66	98	10.4	25.1	58.3	0.16	0.81	92	95	3.43	127	67

A nice homo polled, solid red non diluter; weaning off at 770lb and gaining close to 4lb a day. A great cow family, keep his females. Frame score 6.5. Scrotal 37cm.



LOT 10

11

CCE EKR SONOMA 245D

ASA# 3177133

Tattoo: 245D • BD: 2/27/16
Red • PB SM

Sire: JBS MR PACE 010B
ASR/GLS PACESETTER U862
JBS MISS FORCE 708X
TNT TOP CUT P274
Dam: CCE EKR MS TC 245Z
BDV VIOLA T43

Act. BW	94
Act. WW	745
Adj. WW	780
1/6 WT	1114
Adj. YW	1289
ADG	3.65

EPDs	CE	BW	WW	YW	MCE	MM	MWW	MB	REA	BWratio	WWratio	WDA	API	TI
	6.2	4	82	123	11.5	23.2	64.2	0.03	1.15	96	103	3.51	123	73

An outcross performance bull that had a 103 weaning weight ratio with EPDs that rank him in the top 2% for WW and the top 3% for YW & MWW. Homo polled, solid red non diluter. Frame score 6.6. Scrotal 39 1/2cm.



JBS MR Pace 010B – Sire of Lots 10 & 11

12

CCE EKR DOJ 278D

ASA# 3177165

Tattoo: 278D • BD: 2/19/16
Black • 3/4 SM 1/4 AR

Sire: BBS JUSTICE A207
MLC MR JUSTICE W744
TNT MISS APRIL N134
KS CAPTN JACK T518
Dam: CCEEKR MS BLACKBEARD278Z
CCE EKR MS CHATEAU 827U

Act. BW	93
Act. WW	840
Adj. WW	825
1/6 WT	1158
Adj. YW	1284
ADG	3.15

EPDs	CE	BW	WW	YW	MCE	MM	MWW	MB	REA	BWratio	WWratio	WDA	API	TI
	6.9	2.9	79	119	9.3	24.3	64	0.12	1.01	98	109	3.56	129	76

A stand out since birth, this powerhouse had a weaning weight ratio of 109 and he ranked in the top 3% for WW EPDs, 10% for YW EPDs and 4% for MWW EPDs. Homo polled, hetro black. Frame score 6.5. Scrotal 38cm.



LOT 12



Drew Ekstrum's first deer



LOT 14



LOT 15

13

CCE EKR DODGE 279D

ASA# 3177161

Tattoo: 279D • BD: 3/3/16
Red • PB SM

Sire: MJ MARATHON 6W
TRAXS DEADWOOD A82
C2 SHEAR FORCE 62W

Dam: MLC MR JUSTICE W744
CCE EKR JUDY 279Z
CCE EKR MS SHOT GUN 831U

Act. BW	99
Act. WW	715
Adj. WW	757
1/6 WT	1102
Adj. YW	1305
ADG	3.83

EPDs	CE	BW	WW	YW	MCE	MM	MWW	MB	REA	BWratio	WWratio	WDA	API	TI
	5.4	6.4	75	121	8.6	25.1	62.7	0.04	0.93	91	100	3.53	118	67

The youngest bull in the offering and one of the stoutest; his dam is a maternal brother to lot 25. His EPDs rank him in the top 10% for WW, 3% for YW, and 5% for MWW. Homo polled, solid red non diluter. Frame score 6.7. Scrotal 38cm.

14

CCE EKR COWBOY TROY 302D

ASA# 3177250

Tattoo: 302D • BD: 2/9/16
Black • PB SM

Sire: TRIPLE C SINGLETARY S3H
CCR COWBOY CUT 5048Z
CCR MS 4045 TIME 7322T

Dam: MRL 128W
CCE EKR MS KODIAK302A
CCE EKR MS KATIE 034X

Act. BW	86
Act. WW	785
Adj. WW	779
1/6 WT	1178
Adj. YW	1295
ADG	3.89

EPDs	CE	BW	WW	YW	MCE	MM	MWW	MB	REA	BWratio	WWratio	WDA	API	TI
	10.3	3.2	78	111	10.8	22.5	61.4	0.28	0.82	102	103	3.52	134	78

This guy will be easy to pick out; he has always had that "look at me" look from the time he was born. He ratioed 102 for BW and 103 for WW. He ranks in the top 5% for WW, top 10% for YW and MWW EPDs. Rob Fenenga took home his maternal brother last year. Homo polled, hetro black. Frame score 6.5. Scrotal 37cm.

15

CCE EKR JUDGE 354D

ASA# 3177100

Tattoo: 354D • BD: 2/2/16
Black • 5/8 SM 3/8 AN

Sire: MLC MR JUSTICE W744
BBS JUSTICE A207
TNT MISS APRIL N134

Dam: S A V FINAL ANSWER 0035
CCE EKR MS ANWER 354A
CCE EKR MS TC 164Y

Act. BW	98
Act. WW	780
Adj. WW	735
1/6 WT	1146
Adj. YW	1229
ADG	3.62

EPDs	CE	BW	WW	YW	MCE	MM	MWW	MB	REA	BWratio	WWratio	WDA	API	TI
	6.9	3.5	81	127	9.6	20.3	60.6	0.2	0.92	93	97	3.55	107	72

This SimAngus will have some friends sale day. His maternal brother sold last year to Bob Steers. This powerhouse's WW EPD ranks him in the top 3%, YW in the top 4%, and MWW in the top 10%. Homo polled homo black. Frame score 6.6. Scrotal 38cm.

16

CCE EKR COWBOY TROY 399D ASA# 3177089

Tattoo: 399D • BD: 2/3/16
Black • PB SM

Sire: TRIPLE C SINGLETARY S3H
CCR COWBOY CUT 5048Z
CCR MS 4045 TIME 7322T

Dam: IPU RED WESTERN 49X
MRL MISS 2517Z
MRL MISS 786W

Act. BW	77
Act. WW	710
Adj. WW	683
1/6 WT	1008
Adj. YW	1079
ADG	2.95

EPDs	CE	BW	WW	YW	MCE	MM	MWW	MB	REA	BWratio	WWratio	WDA	API	TI
	13.8	-0.2	62	87	13.5	26	57	0.41	0.83	114	90	2.96	147	77

A nice, black, blaze faced, calving ease prospect here that had a 114 BW ratio. Hetro black homo polled by pedigree. Maternal brother sold last year to Shulte Farms. Frame score 6.2. Scrotal 37cm.

17

CCE EKR JACKPOT 462D

ASA# 3177311

Tattoo: 462D • BD: 1/23/16
Black • PB SM

Sire: HTP SVF IN DEW TIME
WELSHS DEW IT RIGHT067T
SVF/NJC SENERITA N29

Dam: SPRINGCREEK LOTTO 52Y
CCE MS POWER BALL 462B
CCE MS ULTRA MAG 820U

Act. BW	87
Act. WW	750
Adj. WW	732
1/6 WT	1078
Adj. YW	1124
ADG	3.25

EPDs	CE	BW	WW	YW	MCE	MM	MWW	MB	REA	BWratio	WWratio	WDA	API	TI
	9.5	2.3	60	82	11	18.7	48.9	0.06	0.86	99	96	3.06	117	63

A homo polled, homo black calf out of a first calf heifer that weaned off at 750lb. Frame score 6.3. Scrotal 36cm.

18

CCE EKR OCTANE 492D

ASA# 3177210

Tattoo: 492D • BD: 1/16/16
Black • 3/8 SM 5/8 ANSire: **KG HIGH REGARD 2073**
— GEIS BALOO 13'08
— KG MISS WIX 0680
— TRAXS SOLO Y39
Dam: **CCE EKR MS SOLO 492B**
— CCE EKR MS. DICE 653S

Act. BW	76
Act. WW	795
Adj. WW	737
1/6 WT	1198
Adj. YW	1226
ADG	3.99

EPDs	CE	BW	WW	YW	MCE	MM	MWW	MB	REA	BWratio	WWratio	WDA	API	TI
	15.4	-0.1	67	112	9.4	20.3	53.8	0.13	0.69	112	97	3.34	120	65

An outcross SimAngus standout here and out of a first calf heifer! Look at his birth to wean spread, calving ease with performance. His CE and YW EPDs rank him in the top 15% and a 112 BW ratio. Homo polled and homo black. Frame score 6.2. Scrotal 36cm.



LOT 18

19

CCE EKR BLACK GEM 1D

ASA# 3159870

Tattoo: 1D • BD: 2/3/16
Homo Black • PB SMSire: **MR NLC UPGRADE U8676**
— ELLINGSON LEGACY M229
— MS NLC MOJO S6119 B
— HC HUMMER 12M
Dam: **ISHEE MS BLK SAPPHIRE**
— ISHEE MS BLACK HONEY 301

Act. BW	98
Act. WW	855
Adj. WW	797
1/6 WT	1168
Adj. YW	1242
ADG	3.1

EPDs	CE	BW	WW	YW	MCE	MM	MWW	MB	REA	BWratio	WWratio	WDA	API	TI
	9.8	2.6	74	112	11.2	24.1	60.8	0.36	1.23			3.43	136	80

Black Gem is a product of some embryos I bought from Hilltop Simmentals. You won't miss him on sale day. His WW EPD ranks him in the top 15% and YW, MWW EPDs in the top 10%. Homo black hetro polled. Frame score 6.7. Scrotal 35cm.

Ankony Miss Candace – Dam of Lot 20
Pictured at 11 years of age.

20

CCE EKR GRANITE 2D

ASA# 3159869

Tattoo: 2D • BD: 2/4/16
Red • PB SMSire: **TRAXS RUSHMORE X103**
— THSF FREEDOM 300N
— MISS TRAX U850
— BOZ REDCOAT
Dam: **ANKONY MISS CANDACE R169**
— GFI CANDACE G51

Act. BW	100
Act. WW	820
Adj. WW	768
1/6 WT	1172
Adj. YW	1259
ADG	3.49

EPDs	CE	BW	WW	YW	MCE	MM	MWW	MB	REA	BWratio	WWratio	WDA	API	TI
	8.6	2.5	71	106	16.5	22.9	58.2	-0.03	1.03			3.45	118	68

Dependable genetics here, Granite is out of our donor cow R169 who has a 110 weaning weight ratio on her natural born calves. This embryo calf weaned off at over 800lbs. His maternal brother was a high seller to Steve Stulka several years ago. Homo polled, non diluter. Frame score 6.6. Scrotal 39cm.



LOT 20

21

CCE EKR CIMARRON 648D

ASA# 3177170

Tattoo: 648D • BD: 2/11/16
Red • 3/4 SM 3/16 AN 1/16 CSSire: **TRAXS DEADWOOD A82**
— MJ MARATHON 6W
— C2 SHEAR FORCE 62W
— BBS NOPHALT P4
Dam: **CCE MS. PHALTLESS 648S**
— 246

Act. BW	93
Act. WW	825
Adj. WW	776
1/6 WT	1184
Adj. YW	1298
ADG	3.55

EPDs	CE	BW	WW	YW	MCE	MM	MWW	MB	REA	BWratio	WWratio	WDA	API	TI
	6.7	3.6	66	106	4.5	27.7	60.9	0.03	0.82	99	102	3.56	120	66

An outcross, homo polled, solid red non diluter, performance bull that has some maternal kick. His YW EPD ranks him in the top 25% and MM and MWW EPDs rank him in the top 10%. His full brother last year sold to Bill Mushitz. Frame score 6.6. Scrotal 37 cm.

22

CCE EKR BLACK JACK 650D

ASA# 3177143

Tattoo: 650D • BD: 2/16/16
Black • 3/4 SM 1/4 ANSire: **TRAXS DEADWOOD A82**
— MJ MARATHON 6W
— C2 SHEAR FORCE 62W
— WLE EXCEL
Dam: **CCE EKR MS. EXCEL 650S**
— 360

Act. BW	101
Act. WW	825
Adj. WW	784
1/6 WT	1098
Adj. YW	1198
ADG	2.7

EPDs	CE	BW	WW	YW	MCE	MM	MWW	MB	REA	BWratio	WWratio	WDA	API	TI
	6.2	5.3	71	114	5.2	23.4	59.1	0.1	0.74	92	103	3.35	108	63

An outcross, hetro black, homo polled bull whose dam has ratioed 101 for weaning on 9 calves. His WW, YW, and MWW EPDs rank in the top 15%. Frame score 6.5. Scrotal 39cm.

**23****CCE EKR POCONO 713D**

ASA# 3177128

Tattoo: 713D • BD: 2/4/16
Red • 3/4 SM 1/4 ARSire: JBS MR PACE 010B
ASR/GLS PACESETTER U862
JBS MISS FORCE 708X
Dam: CCE EKR MS TOP CUT 713T
TNT TOP CUT P274
CCE EKR MS RMB DUKE 209M

Act. BW	100
Act. WW	825
Adj. WW	754
1/6 WT	1240
Adj. YW	1343
ADG	4.11

EPDs	CE	BW	WW	YW	MCE	MM	MWW	MB	REA	BWratio	WWratio	WDA	API	TI
	5.7	4.3	75	113	10.6	24.8	62.3	0.08	0.95	93	99	3.65	124	70

Need to put some power into your next calf crop? Look no further. This dude was gaining over 4lbs a day. His dam ratioed 105 for weaning on 8 calves and he ranks in the top 10% for WW and MWW EPDs and the top 15% for YW EPDs. Homo polled, solid red non diluter. Frame score 6.8. Scrotal 37cm.

**LOT 25****LOT 26****LOT 27****24****CCE EKR SONORA 801D**

ASA# 3177208

Tattoo: 801D • BD: 1/29/16
Red • 3/4 SM 1/4 ARSire: TRAXS DEADWOOD A82
MJ MARATHON 6W
C2 SHEAR FORCE 62W
Dam: CCE MS SPREAD 801U
LCHMN RED SPREAD 1271F
CCE MS RIGHT TIME 026K

Act. BW	93
Act. WW	865
Adj. WW	759
1/6 WT	1222
Adj. YW	1293
ADG	3.53

EPDs	CE	BW	WW	YW	MCE	MM	MWW	MB	REA	BWratio	WWratio	WDA	API	TI
	8.6	3.4	72	120	11.6	25.6	61.8	0.07	0.75	100	100	3.53	121	66

Dependable genetics here; 801D comes from one of my best cow families. His dam has a weaning weight ratio of 102 on 7 calves. His WW EPD ranks in the top 15% and YW & MWW EPDs rank in the top 10%. Homo polled, solid red non diluter. Frame score 6.7. Scrotal 42cm.

**25****CCE EKR KIMBERLEY 831D**

ASA# 3177187

Tattoo: 831D • BD: 2/18/16
Red • PB SMSire: TRAXS DEADWOOD A82
MJ MARATHON 6W
C2 SHEAR FORCE 62W
Dam: CCE EKR MS SHOT GUN 831U
TNT GUNNER N208
EKR MS HEAVEN 807

Act. BW	100
Act. WW	805
Adj. WW	778
1/6 WT	1174
Adj. YW	1316
ADG	3.65

EPDs	CE	BW	WW	YW	MCE	MM	MWW	MB	REA	BWratio	WWratio	WDA	API	TI
	7	5.1	69	106	9.8	29.2	63.9	0.03	0.7	93	102	3.6	116	65

831D's dam is a no-miss cow; she has ratioed 108 for weaning off 7 calves. Keep every female out of this dude! Look at his MM and MWW EPDs they both rank in the top 5%, plus he has performance! A full sister is in the herd to calve this spring. Homo polled. Frame score 6.6. Scrotal 37cm. He is a maternal brother to lot 13rd dam.**26****CCE EKR SILVERADO 852D**

ASA# 3177252

Tattoo: 852D • BD: 2/12/16
Black • 3/4 SM 1/4 ANSire: MR NLC UPGRADE U8676
ELLINGSON LEGACY M229
MS NLC MOJO S6119 B
Dam: CCE MS SILVERADO 852U
TNT HUMMER H3 R360
357R

Act. BW	102
Act. WW	860
Adj. WW	797
1/6 WT	1284
Adj. YW	1423
ADG	4.2

EPDs	CE	BW	WW	YW	MCE	MM	MWW	MB	REA	BWratio	WWratio	WDA	API	TI
	5.1	4.2	77	121	9.6	19.4	58.1	0.34	0.94	91	105	3.87	109	73

If you are looking for a homo black, homo polled, power bull, this is your guy. He was gaining over 4lbs a day and his WW EPD ranks him in the top 5% and his YW EPD ranks in the top 10%. Frame score 6.8. Scrotal 38cm.

**27****CCE EKR HEMI 853D**

ASA# 3177188

Tattoo: 853D • BD: 2/7/16
Red • PB SMSire: JBS MR PACE 010B
ASR/GLS PACESETTER U862
JBS MISS FORCE 708X
Dam: CCE EKR MS TC 853U
TNT TOP CUT P274
CCE EKR MS TR 043 802H

Act. BW	103
Act. WW	905
Adj. WW	840
1/6 WT	1316
Adj. YW	1430
ADG	4.07

EPDs	CE	BW	WW	YW	MCE	MM	MWW	MB	REA	BWratio	WWratio	WDA	API	TI
	4.8	4	78	119	11.3	25.9	64.8	0.08	0.98	89	111	3.91	118	72

Homo polled, solid red non diluter, powerhouse that will add pounds and eye appeal to your next calf crop. 853D was our heaviest weaning weight bull and gained over 4lbs a day. He ranks in the top 5% for WW EPD, top 4% for YW EPD and top 3% for MWW EPD. His dam and maternal grand dam have been consistent producers, so bid with confidence. His maternal brother sold to Dorwart farms last year. Frame score 6.9. Scrotal 37cm.

28

CCE EKR RICHMOND 912D ASA# 3177224

Tattoo: 912D • BD: 2/19/16
Red • 3/4 SM 3/16 AR 1/16 GV

Sire: JBS MR PACE 010B
ASR/GLS PACESETTER U862
JBS MISS FORCE 708X

Dam: CCE EKR MS VIXAN 912W
ANKONIAN RED CAESAR
HPL 1702G BALANCER N341

Act. BW	93
Act. WW	835
Adj. WW	794
1/6 WT	1184
Adj. YW	1322
ADG	3.46

EPDs	CE	BW	WW	YW	MCE	MM	MWW	MB	REA	BWratio	WWratio	WDA	API	TI
	7	3.4	78	114	11.8	20.1	59.3	0.22	0.82	100	105	3.64	120	71

A nice, performance bull here that should increase your weaning weights. He ranks in the top 4% for WW EPD and top 15% for YW and MWW EPD. Homo polled, solid red non diluter. Frame score 6.4. Scrotal 35cm.



MRL Ringman – Sire of Lot 29

29

CCE EKR JEFFERY 917D ASA# 3177270

Tattoo: 917D • BD: 2/25/16
Red • 3/4 SM 1/4 AR

Sire: MRL RINGMAN 112Z
IPU RED WESTERN 49X
MRL MISS 498N

Dam: CCE EKR MS VIXAN 917W
ANKONIAN RED CAESAR
CCE EKR MS. PRINCESS 509

Act. BW	90
Act. WW	830
Adj. WW	817
1/6 WT	1180
Adj. YW	1340
ADG	3.47

EPDs	CE	BW	WW	YW	MCE	MM	MWW	MB	REA	BWratio	WWratio	WDA	API	TI
	5.7	2.1	68	110	10.6	30.3	64.4	0.09	0.62	104	108	3.7	122	70

Here is that all around bull that that ratioed 104 for BW and 108 for WW. He also ranks in the top 3% for his MM & MWW EPDs. No fluke here; his dam has a 105 BW ratio and 106 WW ratio on 6 calves. Homo polled, solid red non diluter. Frame score 6.7. Scrotal 39cm.



LOT 29

QUICK GUIDE TO ASA EPDs AND \$ INDEXES

Expected Progeny Differences (EPDs): EPDs are the most accurate and effective tool available for comparing genetic levels. In using EPDs, the difference between two sires' EPDs represents the unit difference expected in the performance of their progeny. For example, if sires A and B have EPDs of +10 and -5, a 15-unit difference would be expected in their progeny (moving from -5 to +10 yields 15 units). Key to using EPDs is knowing what units they are expressed in. For example, if the above case referred to weaning weight EPDs, A would be expected to sire 15-pounds more weaning weight than B. If calving ease were the trait, A would be expected to sire 15-percent more unassisted births in first-calf heifers; in other words, if B sired 30 assists in a group of 100 heifers, we'd expect A to require 15 assists. A percentile-ranking chart is required to determine where a bull's EPDs rank him relative to other bulls in the breed. For percentile rankings or more detailed information about EPDs and \$ indexes visit www.simmental.org. Listed below are the units ASA EPDs are expressed in:

All-Purpose Index (API): Dollars per cow exposed under an all-purpose-sire scenario. (See below for more details.)

Back Fat (BF): Inches of backfat.

Birth Weight (BW): Pounds of birth weight.

Calving Ease (CE): Percent of unassisted births when used on heifers.

Carcass Weight (CW): Pounds of carcass weight.

Maternal Calving Ease (MCE): Percent of unassisted births in first-calving daughters.

Milk (MLK): Pounds of weaning weight due to milk.

Marbling (MRB): Marbling score.

Maternal Weaning Weight (MWW): Pounds of weaning weight due to milk and growth.

Ribeye Area (REA): Square inches of ribeye.

Warner-Bratzler Shear Force (WBSF): Pounds of force required to shear a steak.

Stayability (STAY): Percent of daughters remaining in the cowherd at 6 years of age.

Terminal Index (TI): Dollars per cow exposed under a terminal-sire scenario. (See below for more details.)

Weaning Weight (WW): Pounds of weaning weight.

Yearling Weight (YW): Pounds of yearling weight.

Yield Grade (YG): Yield grade score.

\$ Indexes: Though EPDs allow for the comparison of genetic levels for many economically important traits, they only provide a piece of the economic puzzle. That's where \$ indexes come in. Through well-conceived, rigorous mathematical computation, \$ indexes blend EPDs and economics to estimate an animal's overall impact on your bottom line. The same technology that led to the dramatic progress in swine, poultry and dairy genetics over the last several decades was used to develop the following \$ indexes:

All-Purpose Index (API): Evaluates sires for use on the entire cow herd (bred to both Angus first-calf heifers and mature cows) with the portion of their daughters required to maintain herd size retained and the remaining heifers and steers put on feed and sold grade and yield.

Terminal Index (TI): Evaluates sire for use on mature Angus cows with all off-spring put on feed and sold grade and yield.

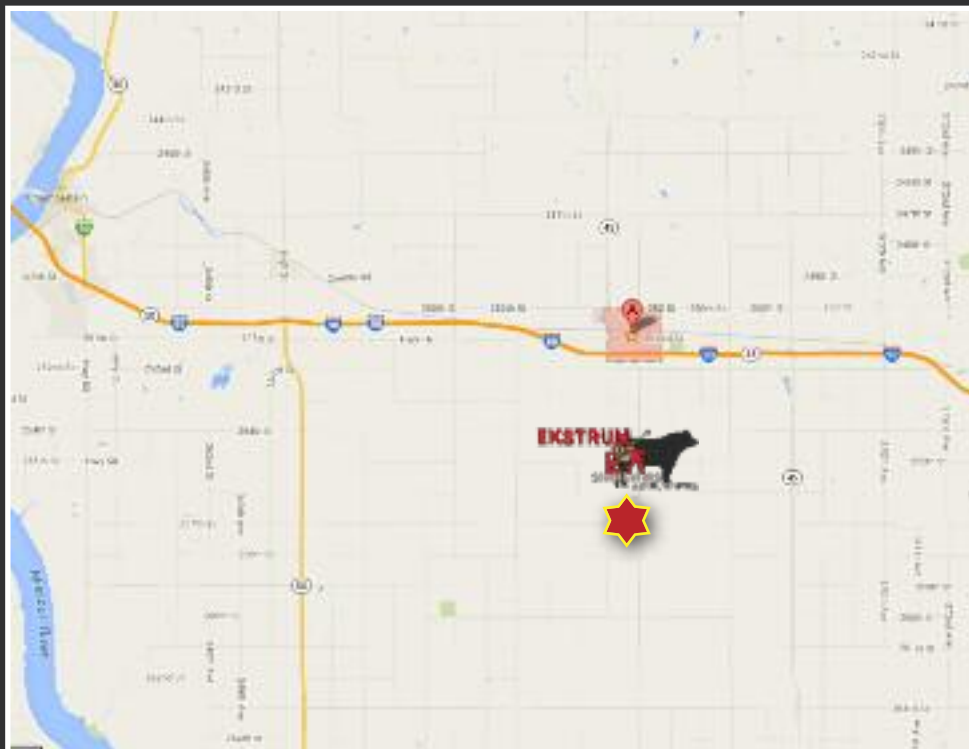
Using API and TI: First, determine which index to use; if you're keeping replacements use API, if not, TI. Then, just as with EPDs, zero in on the unit difference between bulls. (As described above, index units are in dollars per cow exposed.) The difference can be used to determine how much a bull is worth compared to another. Or, put another way, how much you can pay for one bull compared to another. For example, when buying an all-purpose-type sire, you can quickly figure a bull scoring +100 for API is worth an extra \$6,000 over a+50 bull if both are exposed to 30 cows over 4 years (\$50 diff. x 30 hd. x 4 yr. = \$6,000). A percentile-ranking chart is required to determine where a bull's index value ranks him relative to other bulls in the breed. For percentile rankings or more detailed information about EPDs and \$ indexes.



FIRST-CLASS MAIL
U.S. POSTAGE PAID
LivestockDirect
PERMIT NO. 29

36220 257th Street
Kimball, SD 57355

Created by:
ASA PUBLICATION, INC
One Genetics Way, Bozeman, MT 59718
Phone: 406-587-2778
www.simmgene.com



Sale location
36220 257th Street
5 Miles South of Kimball, SD